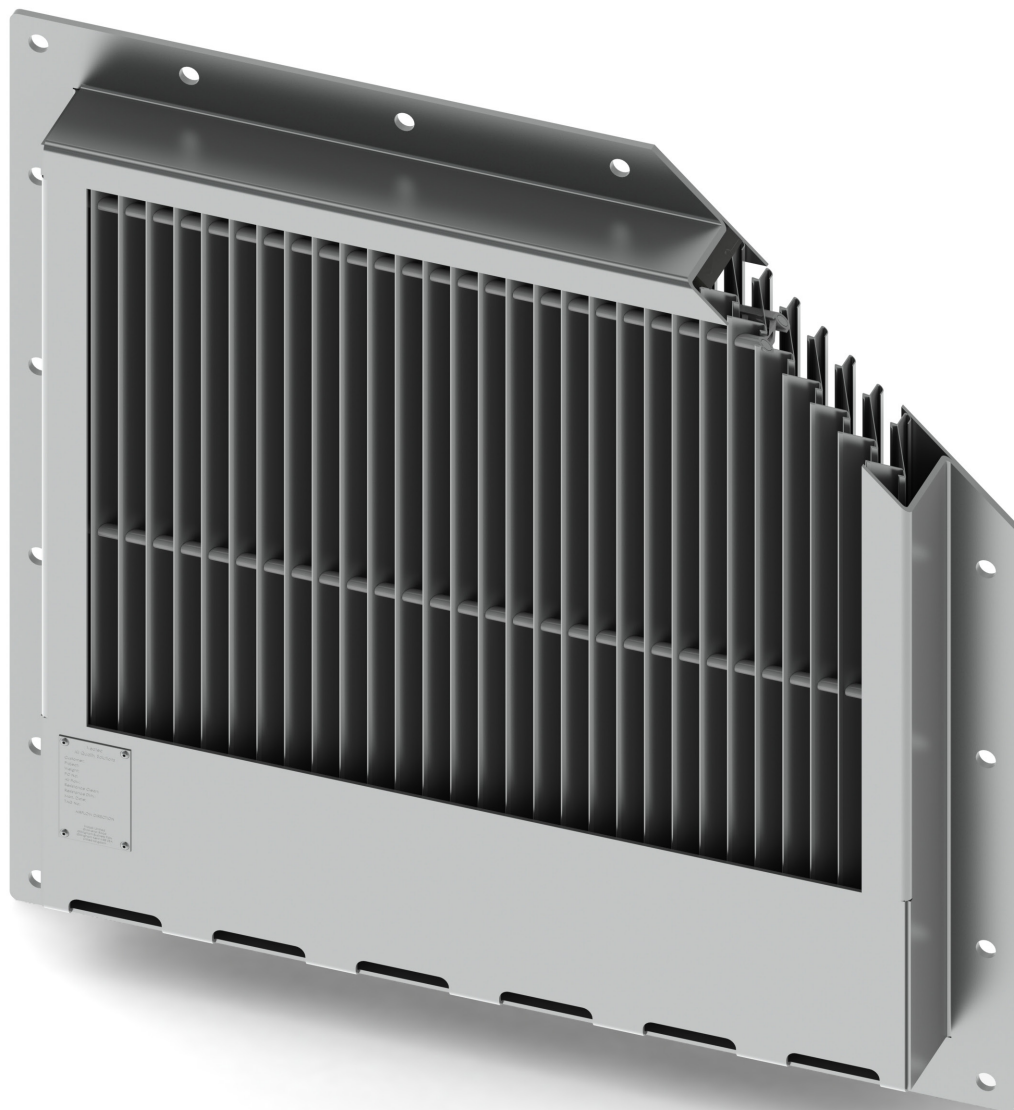


Veotec Single Stage Spray Eliminator (SE1)

Designed for use within the most extreme and demanding environments such as those found in Offshore, Coastal, Marine and Military applications.



Single Stage Spray Eliminator

The single stage separator removes sea spray, rain, bulk water, salt and other fine deliquesced aerosol debris from air intakes and is typically used to protect HVAC equipment, ventilation systems and diesel engine air intakes.

The Veotec SE1 modular design is intended to enable large area intakes such as those in gas turbine filter houses to be fitted in the most cost effective manner.

Features & Benefits

- Removes rain/sea spray from the air
- High efficiency
- Low pressure losses
- Maintenance free
- Custom drainage available
- Aerodynamically optimised for 6.0m/s face velocity
- Sized to suit application

Technical Information

Performance

SE1 operates at over 99% removal of 5-micron water particles

Materials of Construction

Casing and Flanges:

Materials

Stainless Steel 304L/316L (1.4307/1.4404)

Aluminium 5083

Thickness

1.5 – 3.0mm (Overall size and application dependent)

Finish:

Natural

Construction

Flanges manufactured from 2 x casing thickness spot welded together on a regular and even spacing.

Casing thickness shall depend upon the overall size and application of the separator and shall be stated on the General Arrangement Drawing unless otherwise specified (3mm casing thickness also available).

SE Profile Vane:

Materials

Stainless Steel 304L/316L (1.4307/1.4404) (Roll formed from Coil)

Aluminium 6063 T6 (available in Anodised finish - AA15 Silver)

Acrylonitrile styrene acrylate (ASA)

Other Materials:

Vane Spacers: Polyamide (Plastic) Injection Moulded

Internal Foam: Polyether Open Cell Foam

Name Plate: Stainless Steel 316L or Traffolyte

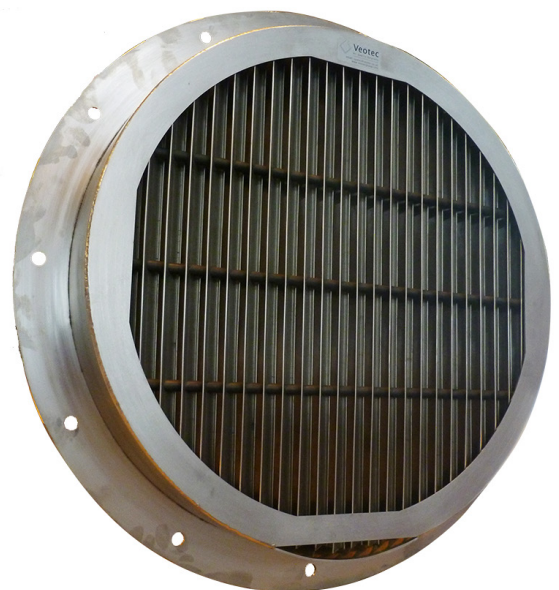
Internal Sealing: Sikaflex S221

Installation

Typical installation arrangements include:

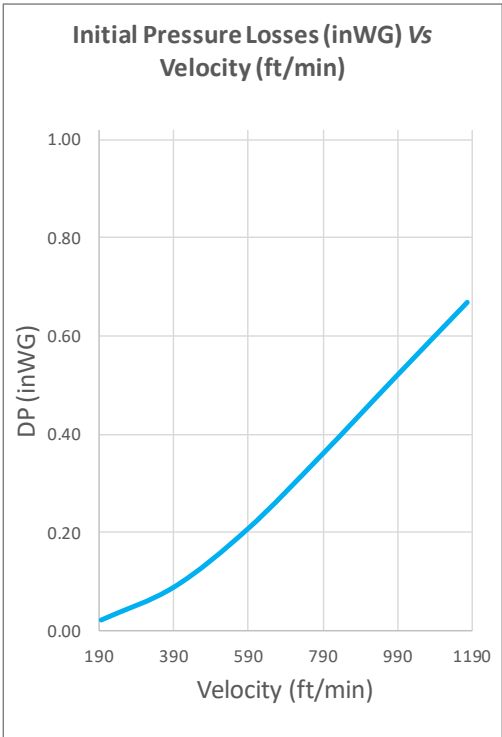
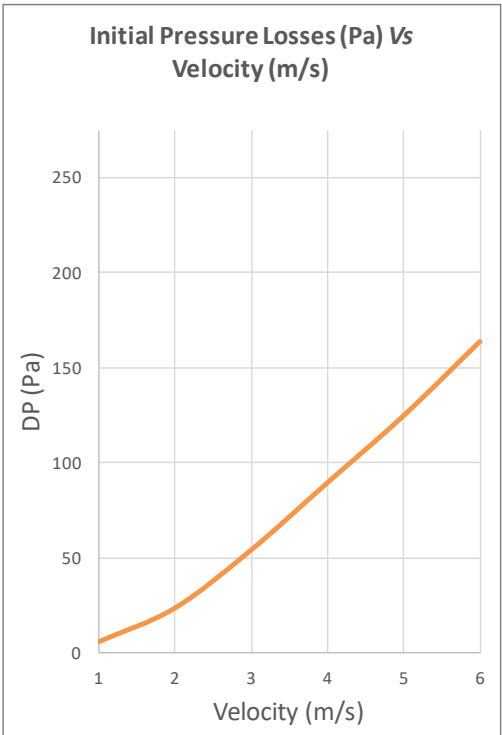
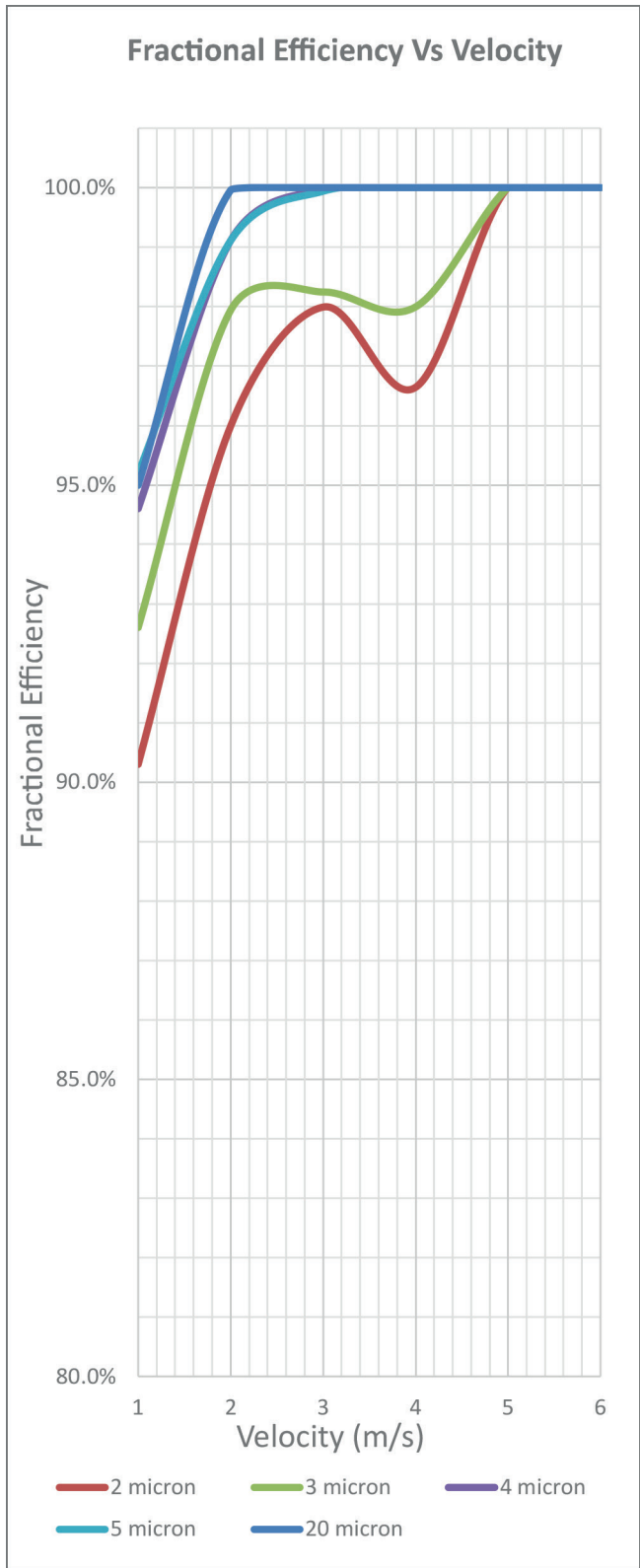
- Front Flange (Through Bulkhead) Mounting
- Rear Flange (On Bulkhead) Mounting
- Double Flange (In Duct) Mounting

Flange dimensions and drilling patterns may be manufactured to customer specifications or to industry standards such as EN ISO 15138.



Performance & Efficiency

Wozair’s performance and efficiency data has been independently verified by an independent testing laboratory and is proven to meet the highest of industry standards.



* SE1-20AL data shown. Other spacing and materials will effect performance.



Wozair Limited

Grosvenor Road
Gillingham Business Park
Gillingham
Kent
ME8 0SA
United Kingdom

Phone +44 (0)1634 790 336

Email hvac@wozair.com

Wozair (USA) Ltd

3601 North Loop
336 West
Conroe
Texas
77304
United States of America

Phone +1 936 521 5990

Email houstonhvac@wozair.com

Wozair (Asia) Pte Ltd

2 Venture Drive
8-23 Vision Exchange
608526
Singapore

Phone +65 6890 6506

Email hvac@wozair.com.sg

Wozair Middle East

Office 202
LOB 17 Building JAFZA
Next to Gate 4
Dubai
P.O. Box 262404
United Arab Emirates

Phone +971 (0) 4 887 0147

Email dubaihvac@wozair.com