

Veotec Core Eliminators

Offering a unique, cost saving and flexible solution to a range of droplet elimination applications.



SECORE-17PVC - Spray Eliminator Core

The Veotec SECORE is a modular product designed to be installed within a casing or air intake system manufactured by others. The vane profile and design is utilised within Veotec's own 'SE' range of spray eliminators and is designed for use within the most extreme and demanding of environments including offshore, coastal, marine and military applications.

Features & Benefits

- Aerodynamically optimised for velocities greater than 2m/s
- Exceptional rain, spray and fog removal
- High efficiency
- Low pressure losses
- Low maintenance
- Sized to suit application
- Short Lead Times
- Available in kit form for assembly by others

Materials of Construction (SE Profile Vane)

Material

RPVC—Rigid Poly Vinyl Chloride

Finish

Natural

Construction

1.2mm thick extrusion

Materials of Construction (Other)

Vane Spacers

Polyamide (Plastic) Injection Moulded

End Spacers

Polyamide (Plastic) Injection Moulded

Tie Rods

GRP—Glass Reinforced Plastic or Stainless Steel 316L

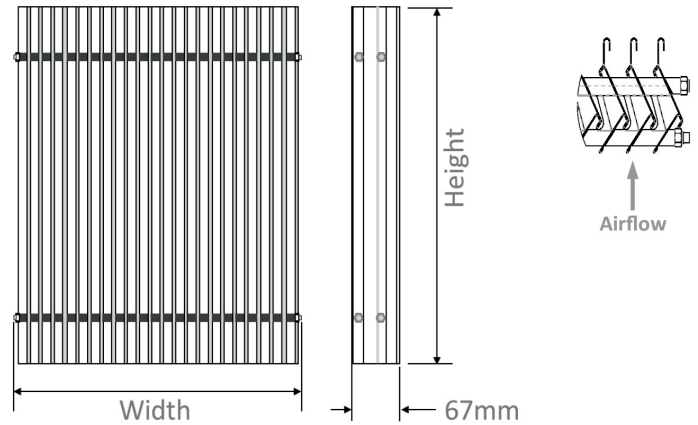
End Nuts

A1 Stainless Steel Star Washers or Stainless Steel A4 Nyloc Nuts

Installation

Veotec's PVC SECORE Spray Eliminator Cores should be installed with supporting metal work beneath the core within assemblies, maintaining a clearance of approximately 30mm for drainage.

Installations should be designed taking into account manufacturing tolerances of +/-2mm, the use of foam with a compression rate 50% or greater within the lid / top of framework is recommended.

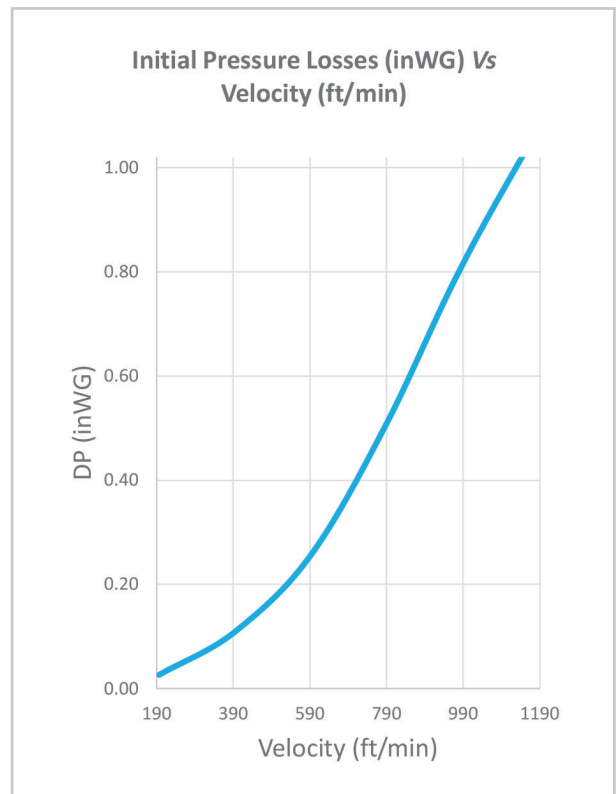
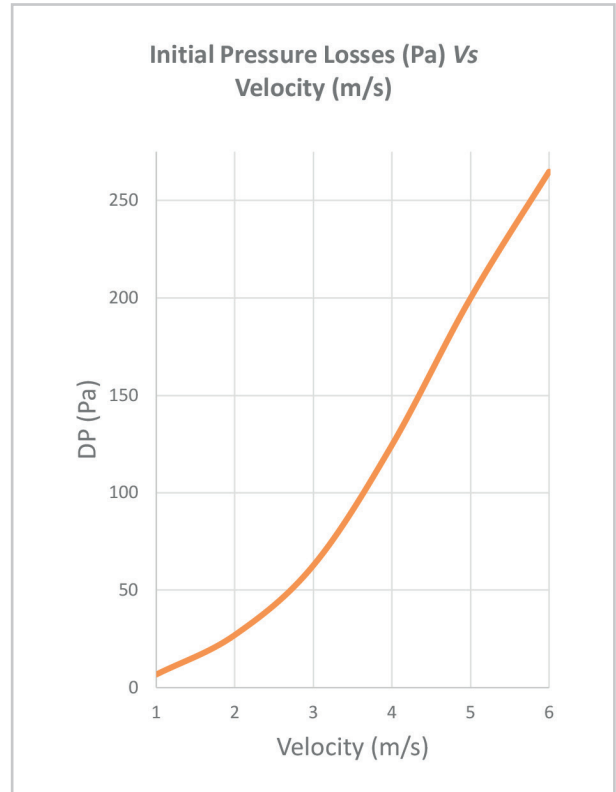
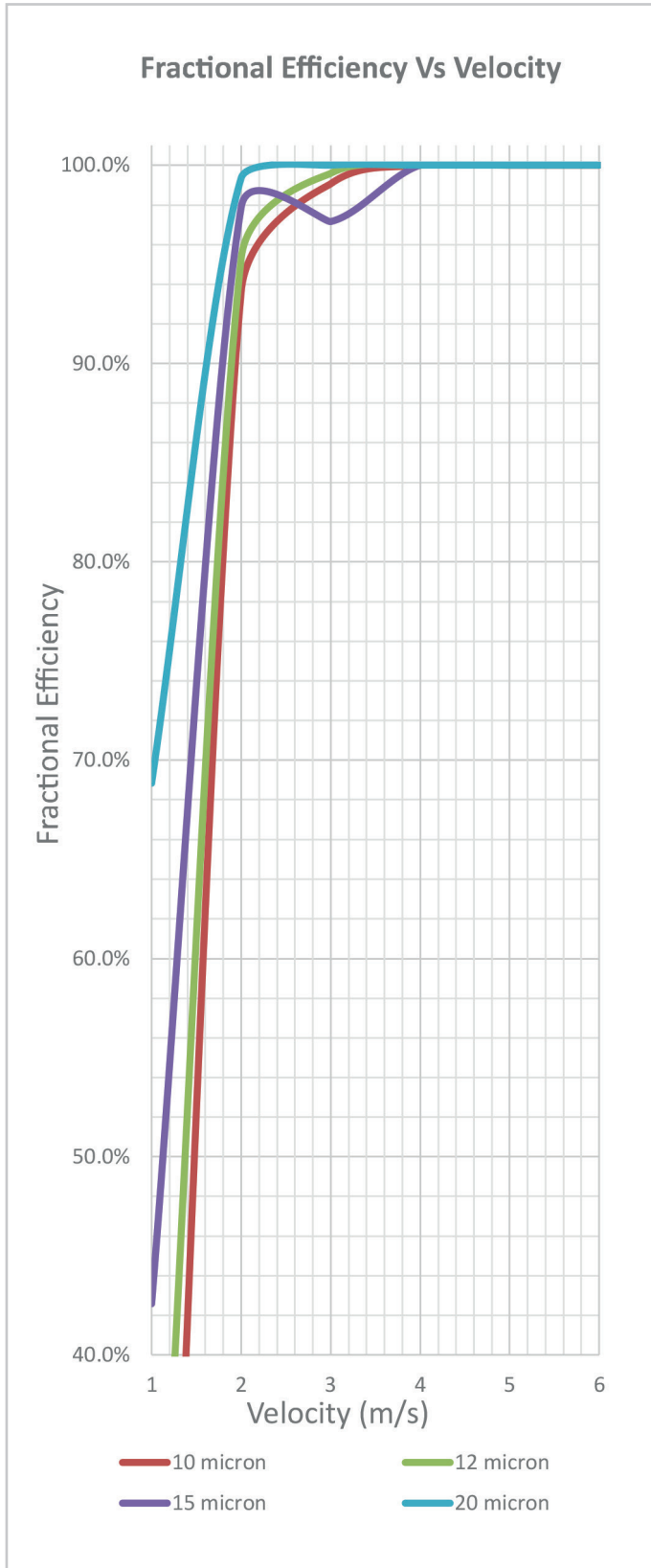


**Maximum width of individual core = 1500mm Maximum height of individual core = 2900mm
Dimensions outside of those stated above shall be considered but shall be subject to technical review.
SECORE is also available in Aluminium and Stainless Steel, efficiency may vary with material.



Performance & Efficiency

Veotec's performance and efficiency data has been verified by an independent testing laboratory and is proven to meet the highest of industry standards.



SECORE-20SS - Spray Eliminator Core

The Veotec SECORE is a modular product designed to be installed within a casing or air intake system manufactured by others. The vane profile and design is utilised within Veotec's own 'SE' range of spray eliminators and is designed for use within the most extreme environments including offshore, coastal, marine and military applications.

Features & Benefits

- Aerodynamically optimised for velocities greater than 2m/s
- Exceptional rain, spray and fog removal
- High efficiency
- Low pressure losses
- Low maintenance
- Sized to suit application
- Short Lead Times
- Available in kit form for assembly by others

Materials of Construction (SE Profile Vane)

Material

Stainless Steel 316L / DIN 1.4404 or
Stainless Steel 304L / DIN 1.4307

Finish

Natural (Brushed 180 grit prior to forming)

Construction

0.6mm thick roll formed from coil

Materials of Construction (Other)

Vane Spacers

Polyamide (Plastic) Injection Moulded

End Spacers

Polyamide (Plastic) Injection Moulded

Tie Rods

Stainless Steel 316L / DIN 1.4404

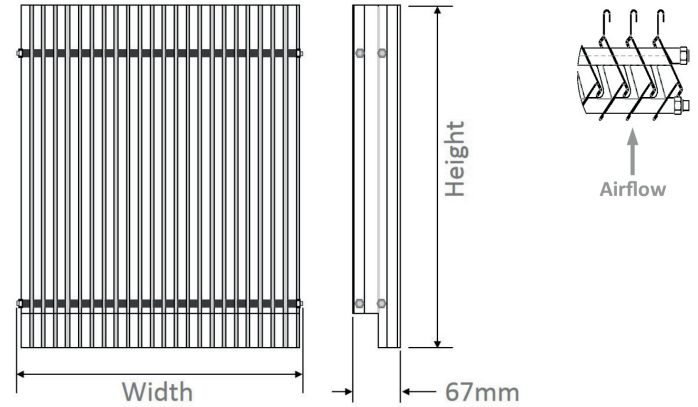
End Nuts

Stainless Steel A4

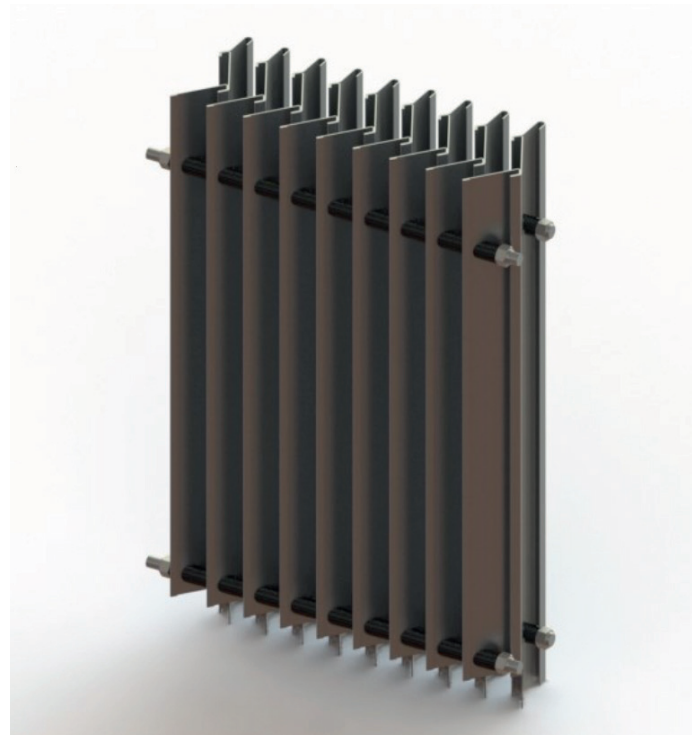
Installation

Veotec's Stainless Steel SECORE Spray Eliminator Cores have been designed to incorporate allowances for drainage and water run-off negating the need for additional supporting metal work beneath the core within assemblies.

Installations should be designed taking into account manufacturing tolerances of +/-2mm, the use of foam with a compression rate 50% or greater within the lid / top of framework is recommended.

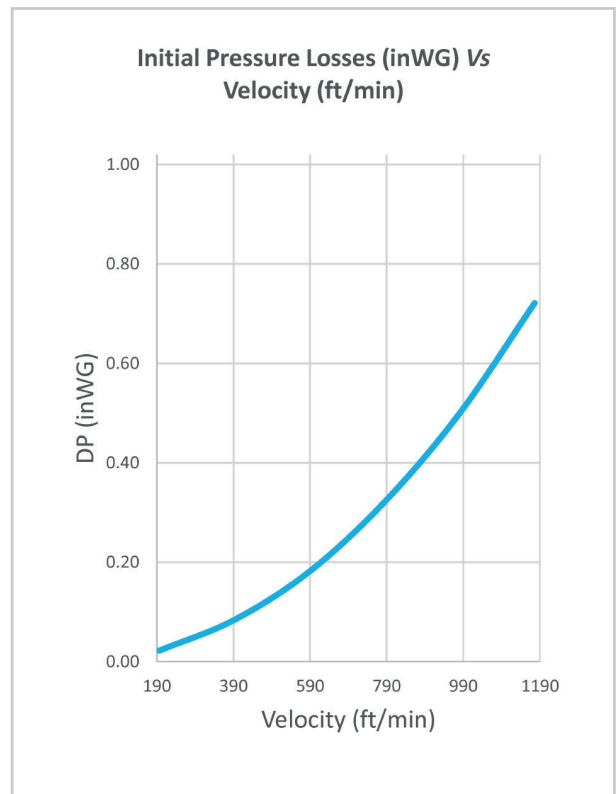
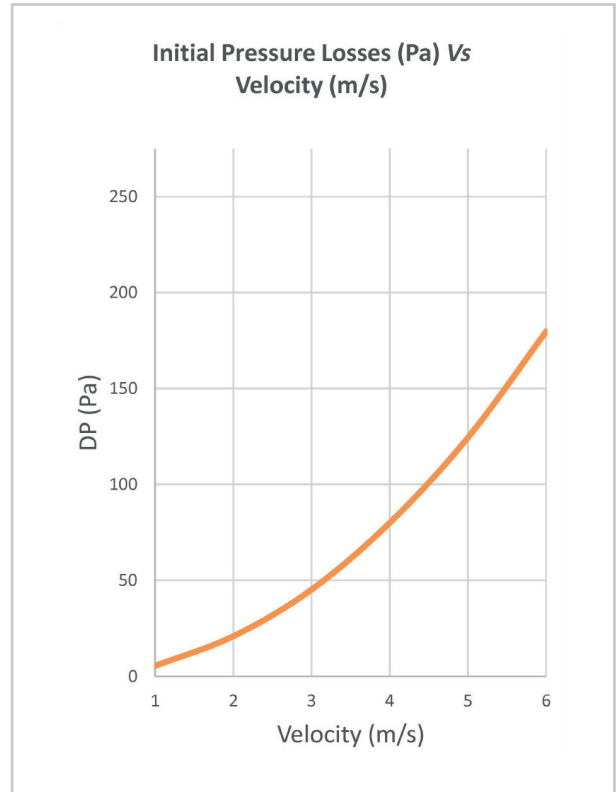
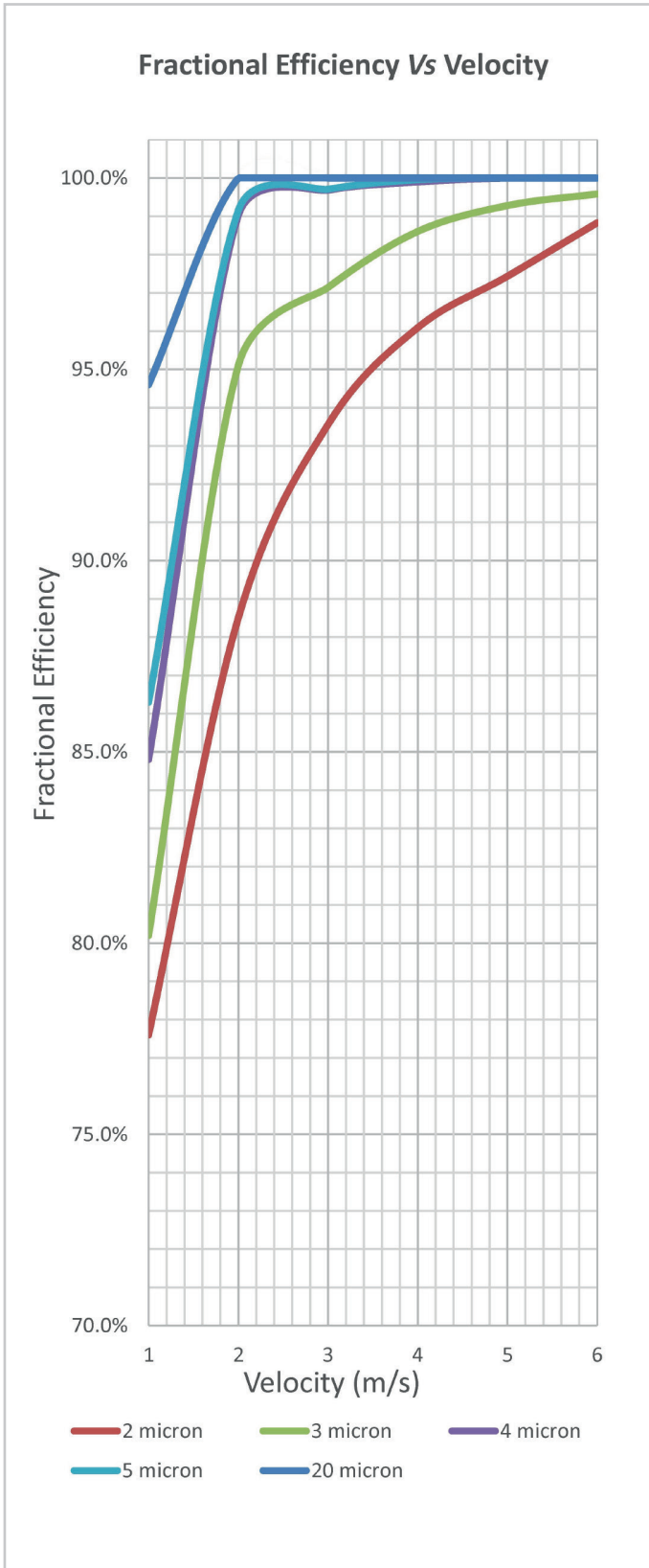


**Maximum width of individual core = 2000mm Maximum height of individual core = 3000mm
Dimensions outside of those stated above shall be considered but shall be subject to technical review.
SECORE is also available in Aluminium and RPVC, efficiency may vary with material.



Performance & Efficiency

Veotec's performance and efficiency data has been verified by an independent testing laboratory and is proven to meet the highest of industry standards.



SECORE-20AL - Spray Eliminator Core

The Veotec SECORE is a modular product designed to be installed within a casing or air intake system manufactured by others. The vane profile and design is utilised within Veotec's own 'SE' range of spray eliminators and is designed for use within the most extreme and demanding environments including offshore, coastal, marine and military applications.

Features & Benefits

- Aerodynamically optimised for velocities greater than 2m/s
- Exceptional rain, spray and fog removal
- High efficiency
- Low pressure losses
- Low maintenance
- Sized to suit application
- Short Lead Times
- Available in kit form for assembly by others

Materials of Construction (SE Profile Vane)

Material

6063 T6 — Marine Grade Aluminium

Finish

Natural

Construction

1.5mm thick extrusion

Materials of Construction (Other)

Vane Spacers

Polyamide (Plastic) Injection Moulded

End Spacers

Polyamide (Plastic) Injection Moulded

Tie Rods

6082 T6 — Aluminium

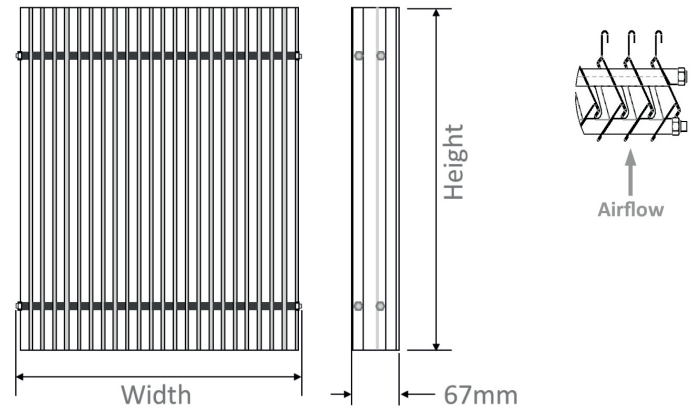
End Nuts

Aluminium Nyloc Nuts

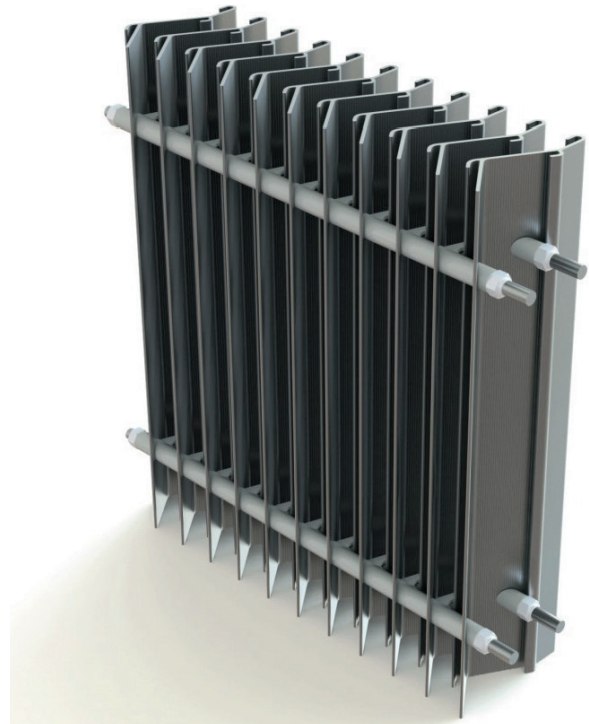
Installation

Veotec's Aluminium SECORE Spray Eliminator Cores should be installed with supporting metal work beneath the core within assemblies, maintaining a clearance of approximately 30mm for drainage.

Installations should be designed taking into account manufacturing tolerances of +/-2mm, the use of foam with a compression rate 50% or greater within the lid / top of framework is recommended.

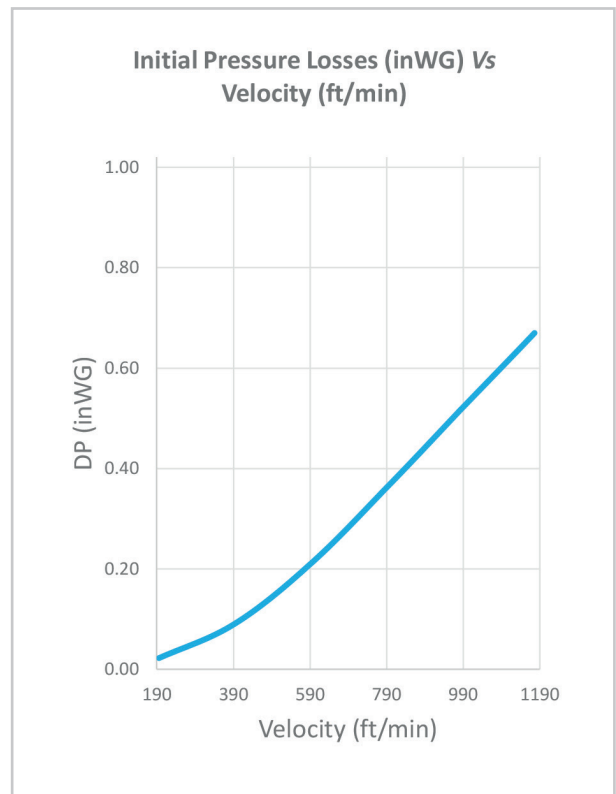
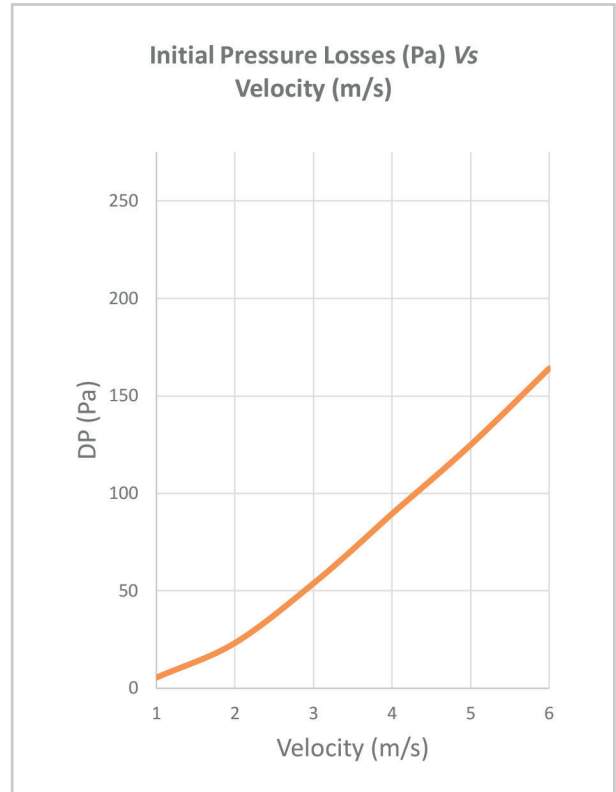
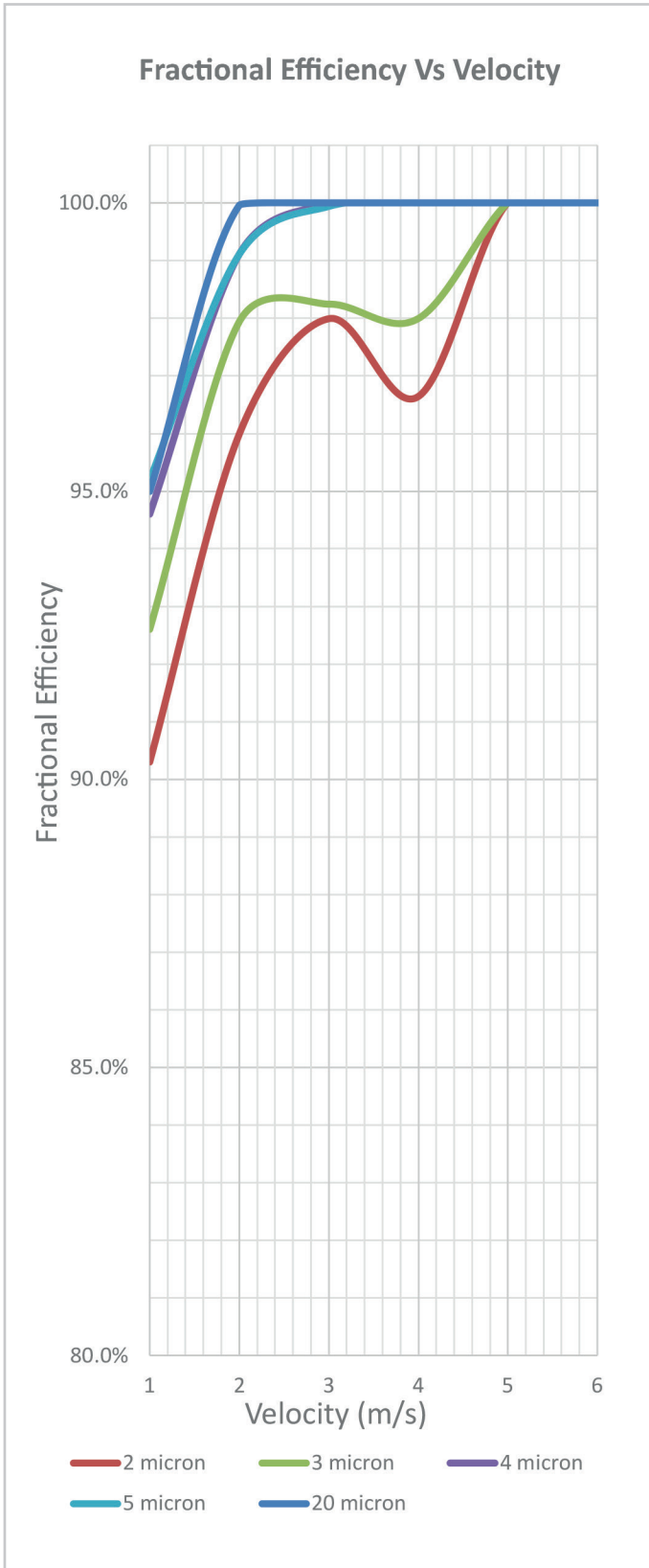


**Maximum width of individual core = 1500mm Maximum height of individual core = 2900mm
Dimensions outside of those stated above shall be considered but shall be subject to technical review.
SECORE is also available in RPVC and Stainless Steel, efficiency may vary with material.



Performance & Efficiency

Veotec's performance and efficiency data has been verified by an independent testing laboratory and is proven to meet the highest of industry standards.



SRCORE-21AL - Spray Eliminator Core

The Veotec SRCORE is a modular product designed to be installed within a casing or air intake system manufactured by others. The vane profile and design is utilised within Veotec's own 'SR' range of spray eliminators and is designed for use within the most extreme environments including offshore, coastal, marine and military applications.

Features & Benefits

- Aerodynamically optimised for velocities greater than 2m/s
- Exceptional rain and spray removal
- High efficiency
- Ultra low pressure losses
- Low maintenance
- Sized to suit application
- Short lead times
- Available in kit form for assembly by others

Materials of Construction (SE Profile Vane)

Material

6063 T6 — Marine Grade Aluminium

Finish

Natural

Construction

1.2mm thick extrusion

Materials of Construction (Other)

Vane Spacers

Polyamide (Plastic) Injection Moulded

End Spacers

Polyamide (Plastic) Injection Moulded

Tie Rods

6082 T6 — Aluminium

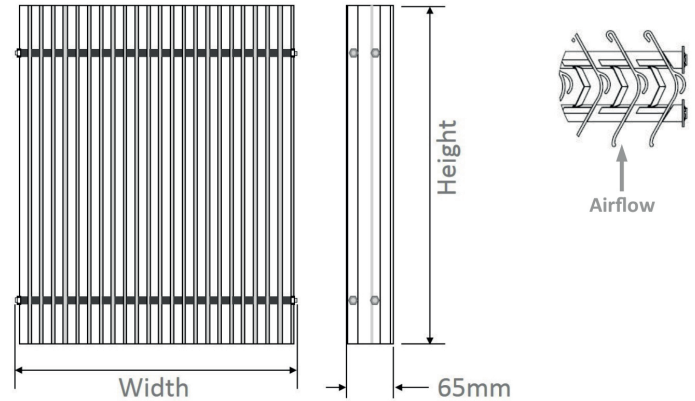
End Nuts

Aluminium full nut (with threadlock)

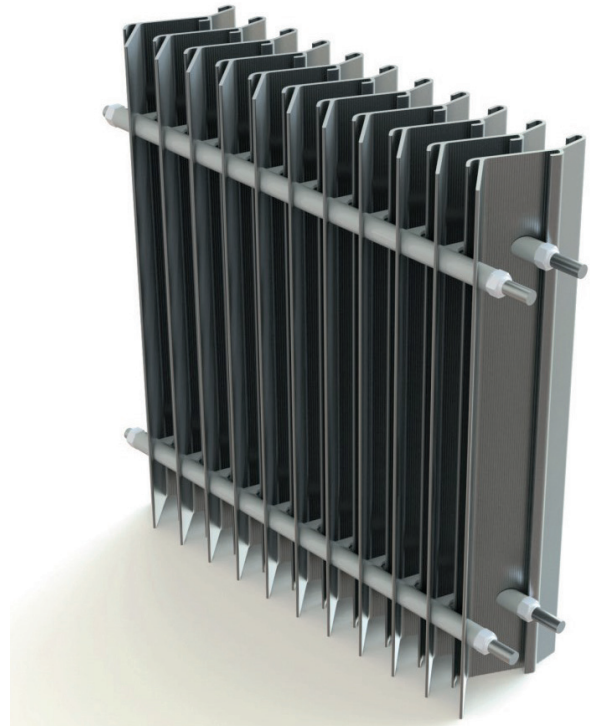
Installation

Veotec's Aluminium SRCORE Spray Eliminator Cores should be installed with supporting metal work beneath the core within assemblies, maintaining a clearance of approximately 30mm for drainage.

Installations should be designed taking into account manufacturing tolerances of +/-2mm, the use of foam with a compression rate 50% or greater within the lid / top of framework is recommended.

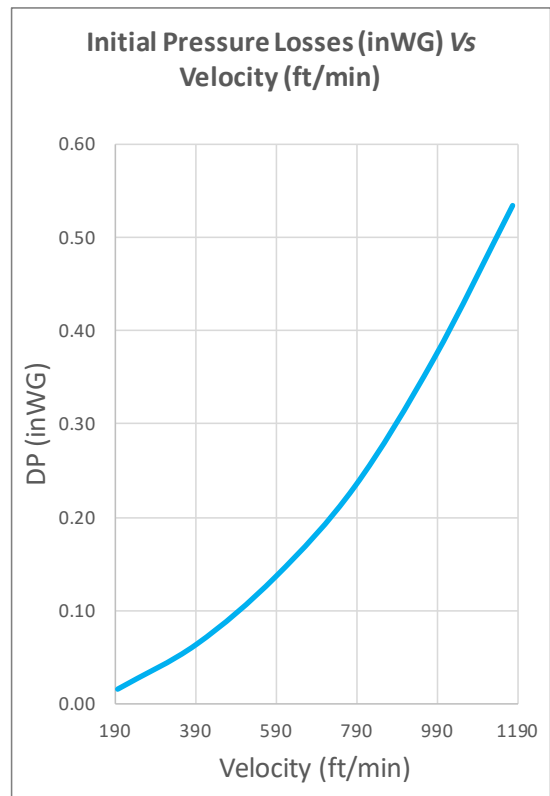
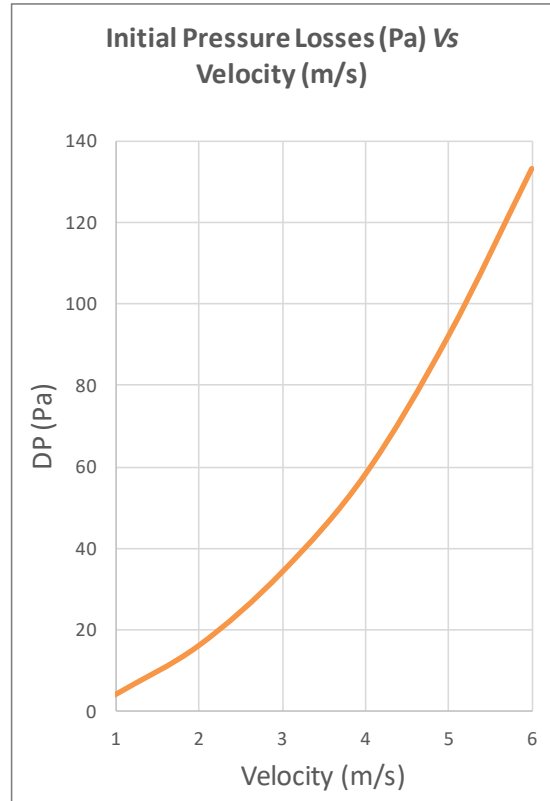
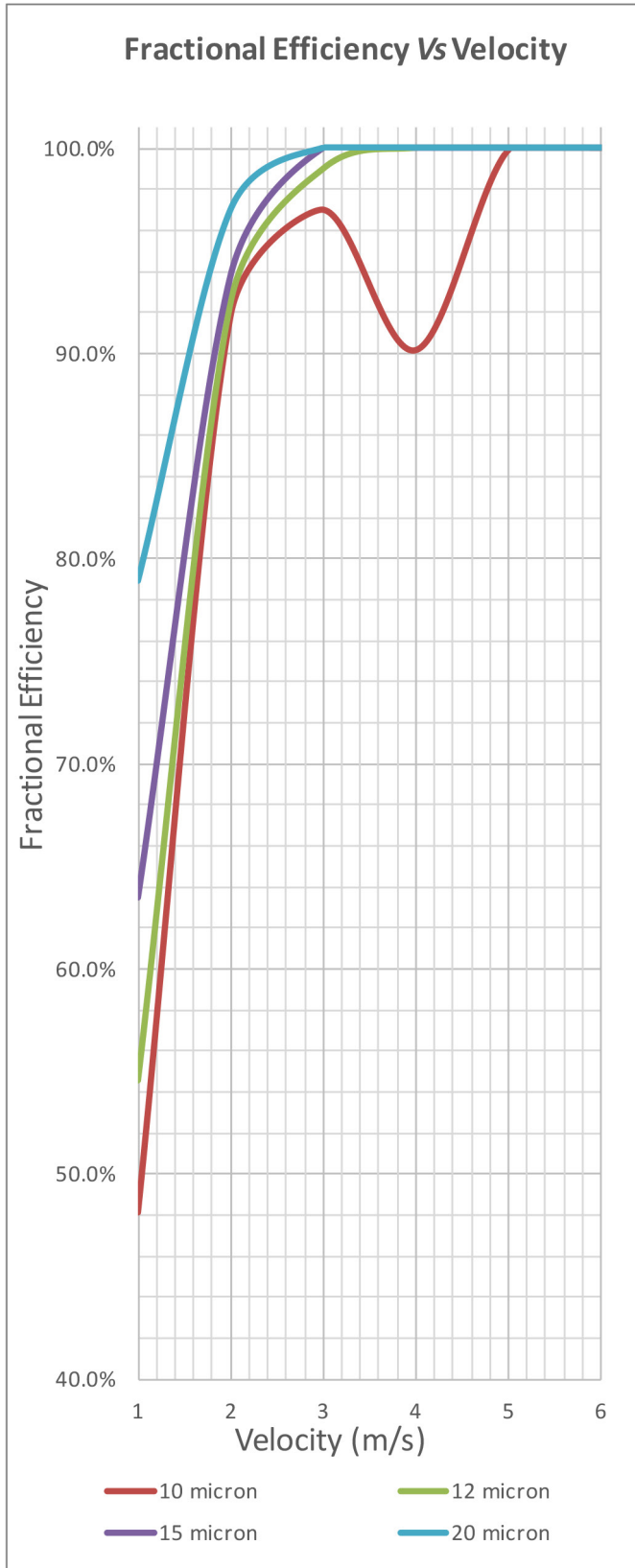


**Maximum width of individual core = 1500mm Maximum height of individual core = 2900mm
Dimensions outside of those stated above shall be considered but shall be subject to technical review.
SECORE is also available in RPVC and Stainless Steel, efficiency may vary with material.



Performance & Efficiency

Veotec's performance and efficiency data has been verified by an independent testing laboratory and is proven to meet the highest of industry standards.



SRCORE-21ASA - Spray Eliminator Core

The Veotec SECORE is a modular product designed to be installed within a casing or air intake system manufactured by others. The vane profile and design is utilised within Veotec's own 'SR' range of spray eliminators and is designed for use within the most extreme environments including offshore, coastal, marine and military applications.

Features & Benefits

- Aerodynamically optimised for velocities greater than 2m/s
- Exceptional rain and spray removal
- High efficiency
- Ultra low pressure losses
- Low maintenance
- Sized to suit application
- Short Lead Times
- Available in kit form for assembly by others

Materials of Construction (SE Profile Vane)

Material

ASA—Acrylonitrile styrene acrylate (subject to availability)

Finish

Natural

Construction

1.4mm thick extrusion

Materials of Construction (Other)

Vane Spacers

Polyamide (Plastic) Injection Moulded

End Spacers

Polyamide (Plastic) Injection Moulded

Tie Rods

GRP—Glass Reinforced Plastic or Stainless Steel 316L

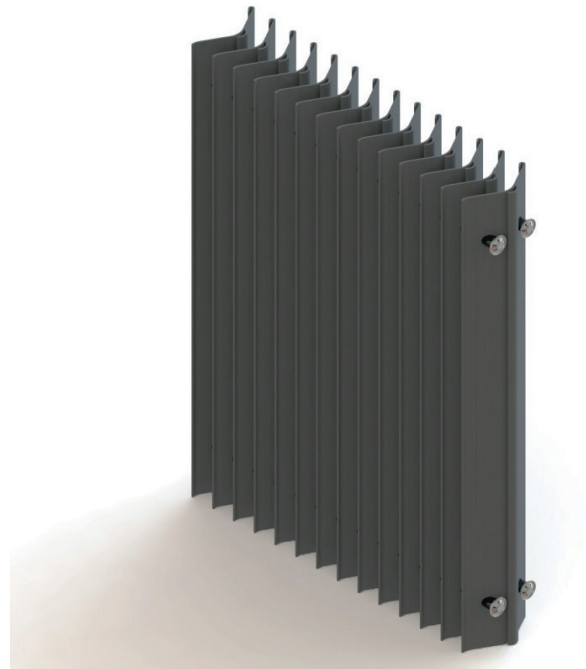
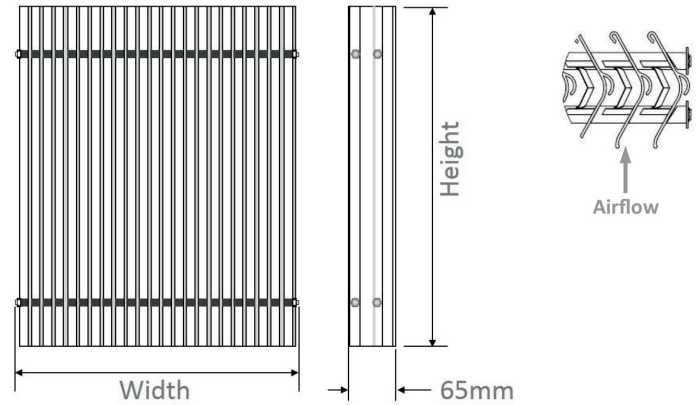
End Nuts

A1 Stainless Steel Star Washers or Stainless Steel A4 Nyloc Nuts

Installation

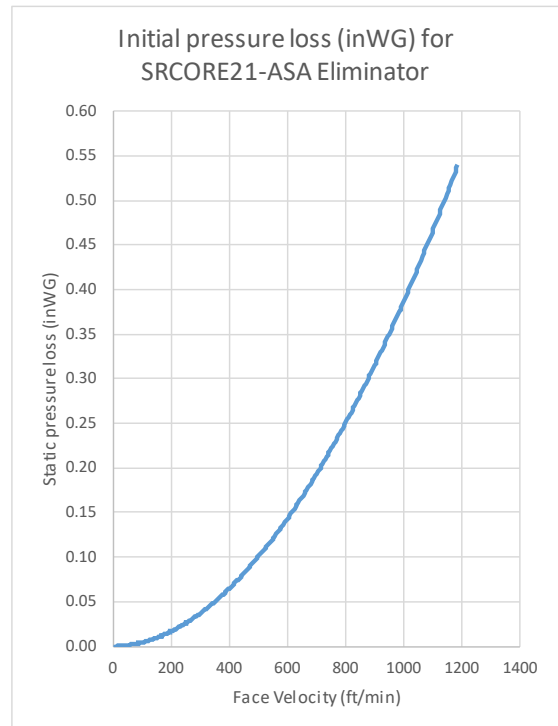
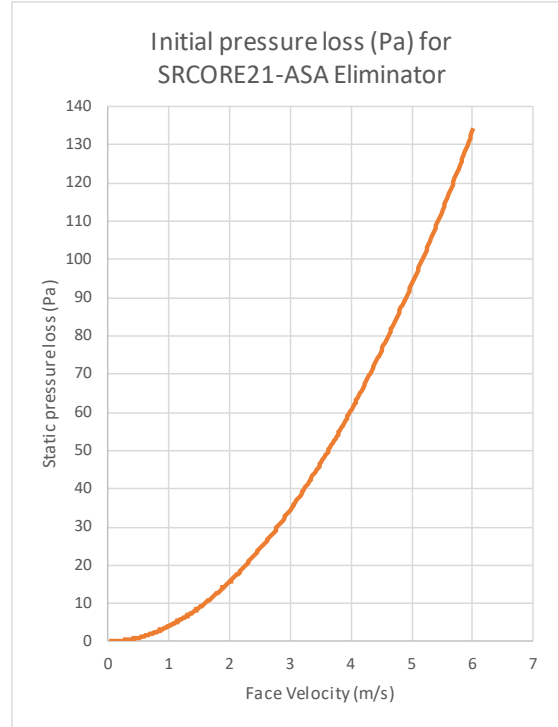
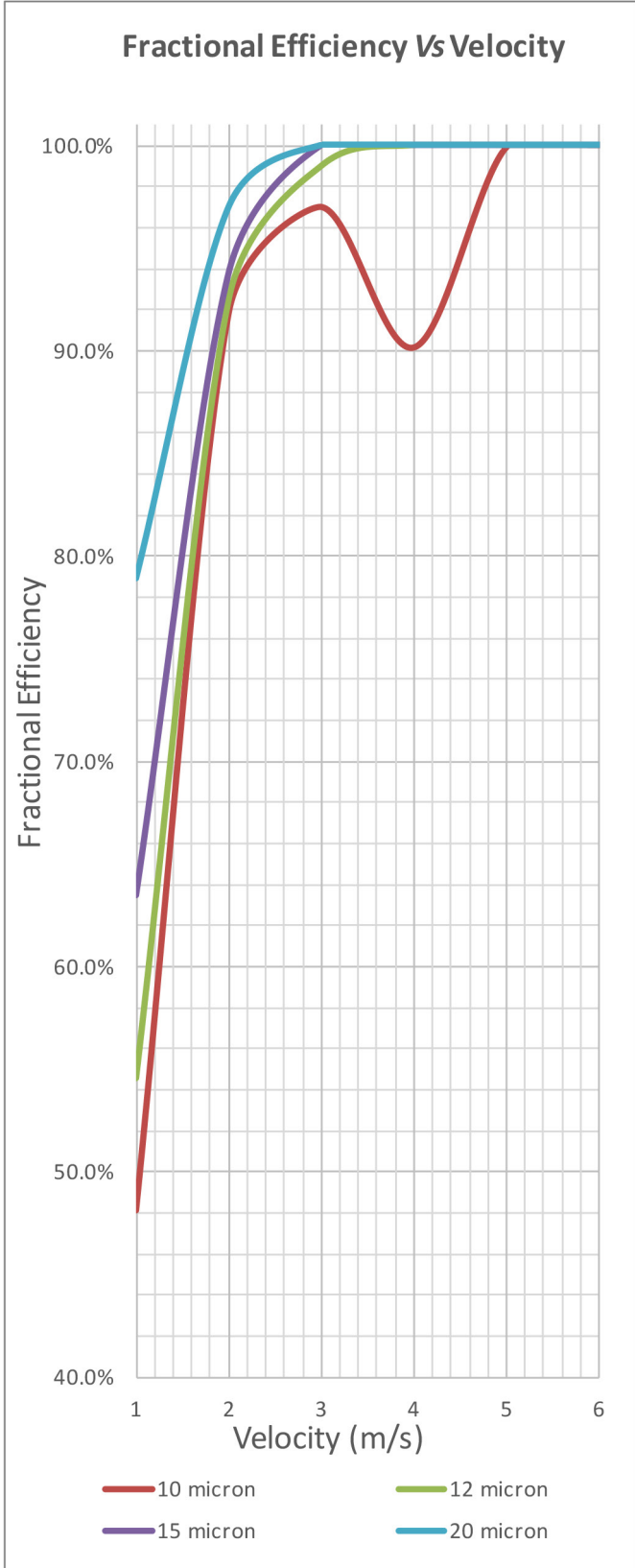
Veotec's PPTV SRCORE Spray Eliminator Cores should be installed with supporting metal work beneath the core with-in assemblies, maintaining a clearance of approximately 30mm for drainage.

Installations should be designed taking into account manufacturing tolerances of +/-2mm, the use of foam with a compression rate 50% or greater within the lid / top of framework is recommended.



Performance & Efficiency

Veotec's performance and efficiency data has been verified by an independent testing laboratory and is proven to meet the highest of industry standards.



Wozair Limited

Grosvenor Road
Gillingham Business Park
Gillingham
Kent
ME8 0SA
United Kingdom

Phone +44 (0)1634 790 336

Email hvac@wozair.com

Wozair (USA) Ltd

3601 North Loop
336 West
Conroe
Texas
77304
United States of America

Phone +1 936 521 5990

Email houstonhvac@wozair.com

Wozair (Asia) Pte Ltd

2 Venture Drive
8-23 Vision Exchange
608526
Singapore

Phone +65 6890 6506

Email hvac@wozair.com.sg

Wozair Middle East

Office 202
LOB 17 Building JAFZA
Next to Gate 4
Dubai
P.O. Box 262404
United Arab Emirates

Phone +971 (0) 4 887 0147

Email dubaihvac@wozair.com