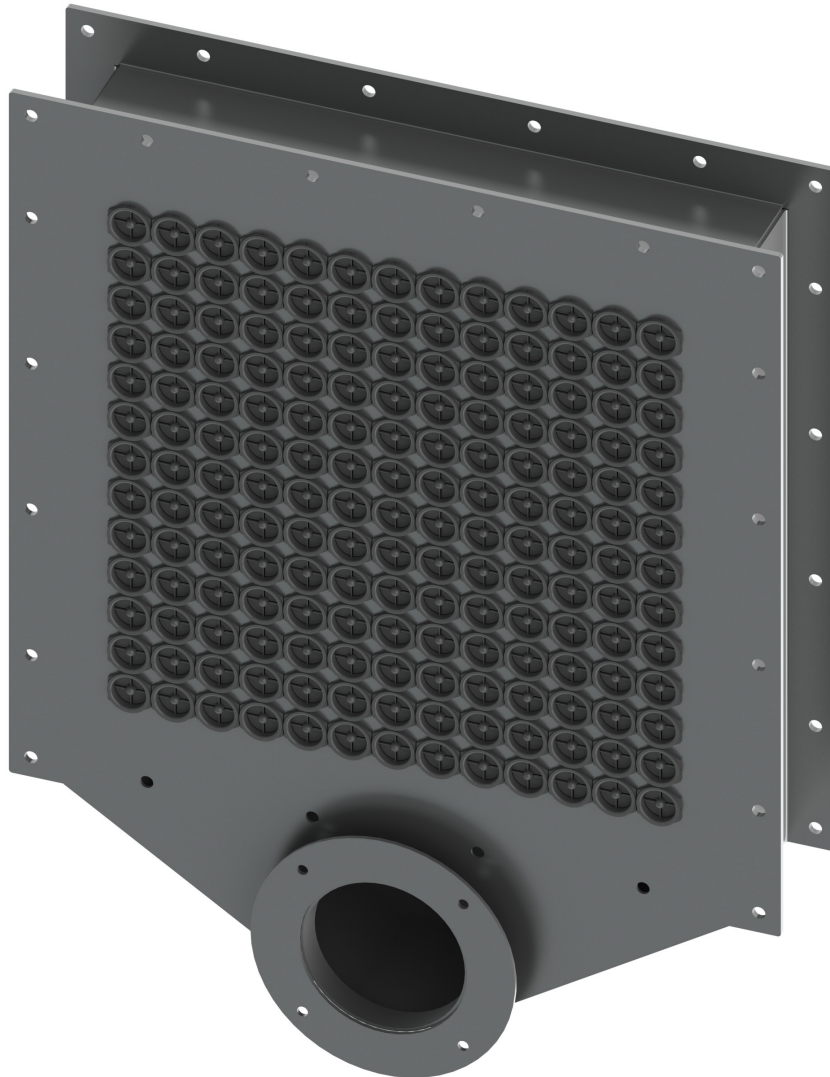


## Spin Tube Separator (STS)

The spin tube separator is a self-cleaning inertial filter, consisting of an assembly of small moulded cyclones.



## Spin Tube Separator

The Spin Tube Separator is manufactured to order with the number of tubes, duct size and tube configurations adjusted to suit the application.

Typical duct dimensions can range from 300mm x 300mm to 2000mm x 2000mm excluding bleed air duct transition which may also be configured to suit specific applications and project requirements. Standard cyclone material is polypropylene.

### Features & Benefits

- Small size and flexibility, due to modular concept
- Low cost and long life product design
- No maintenance, the system filter does not need any regular maintenance as the filtered dust is automatically and continuously evacuated.

## How It Works

The contaminated air (1) enters the filter unit through the inlet tube.

The guide vanes which are fixed in the front of this tube, forces the entering air to swirl.

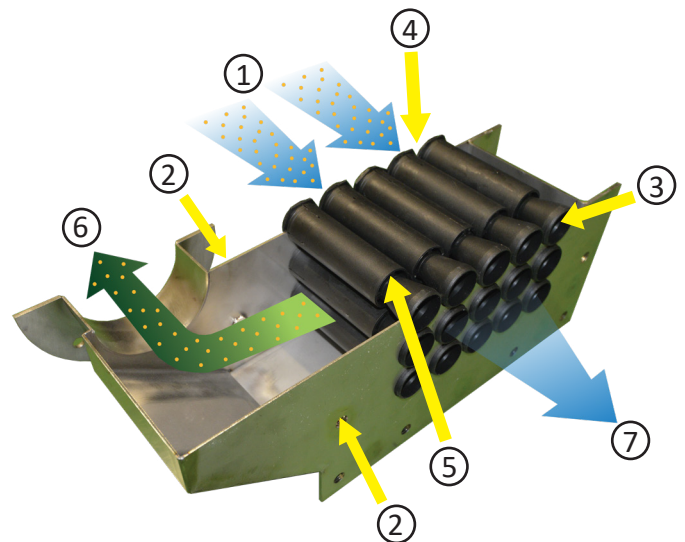
The cyclones are mounted in a battery between two baffle plates (2) to form a sandwich.

One or more sandwiches may be required, depending upon the air flow to be treated and the design selected to suit the individual application.

Each cyclone is made up of two parts: the outer tube (3) and the guide vanes (4).

Due to the centrifugal force created by the guide vanes on the air, the particles to be eliminated move along the surface of the inlet tube to its extremity. The outlet tube permits the particles to be evacuated out of the filter unit through an opening called the bleed hole (5). It is subsequently removed by a bleed fan attached to the assembly (6).

The purified central stream of the air flow is collected by the outlet tube to arrive at the delivery point (7). If the main air flow is drawn through the filter unit (machine downstream), it is necessary to use ancillary device for the bleed flow (fan, ejector).



## **Wozair Limited**

Grosvenor Road  
Gillingham Business Park  
Gillingham  
Kent  
ME8 0SA  
United Kingdom

**Phone** +44 (0)1634 790 336

**Email** [hvac@wozair.com](mailto:hvac@wozair.com)

## **Wozair (USA) Ltd**

3601 North Loop  
336 West  
Conroe  
Texas  
77304  
United States of America

**Phone** +1 936 521 5990

**Email** [houstonhvac@wozair.com](mailto:houstonhvac@wozair.com)

## **Wozair (Asia) Pte Ltd**

2 Venture Drive  
8-23 Vision Exchange  
608526  
Singapore

**Phone** +65 6890 6506

**Email** [hvac@wozair.com.sg](mailto:hvac@wozair.com.sg)

## **Wozair Middle East**

Office 202  
LOB 17 Building JAFZA  
Next to Gate 4  
Dubai  
P.O. Box 262404  
United Arab Emirates

**Phone** +971 (0) 4 887 0147

**Email** [dubaihvac@wozair.com](mailto:dubaihvac@wozair.com)