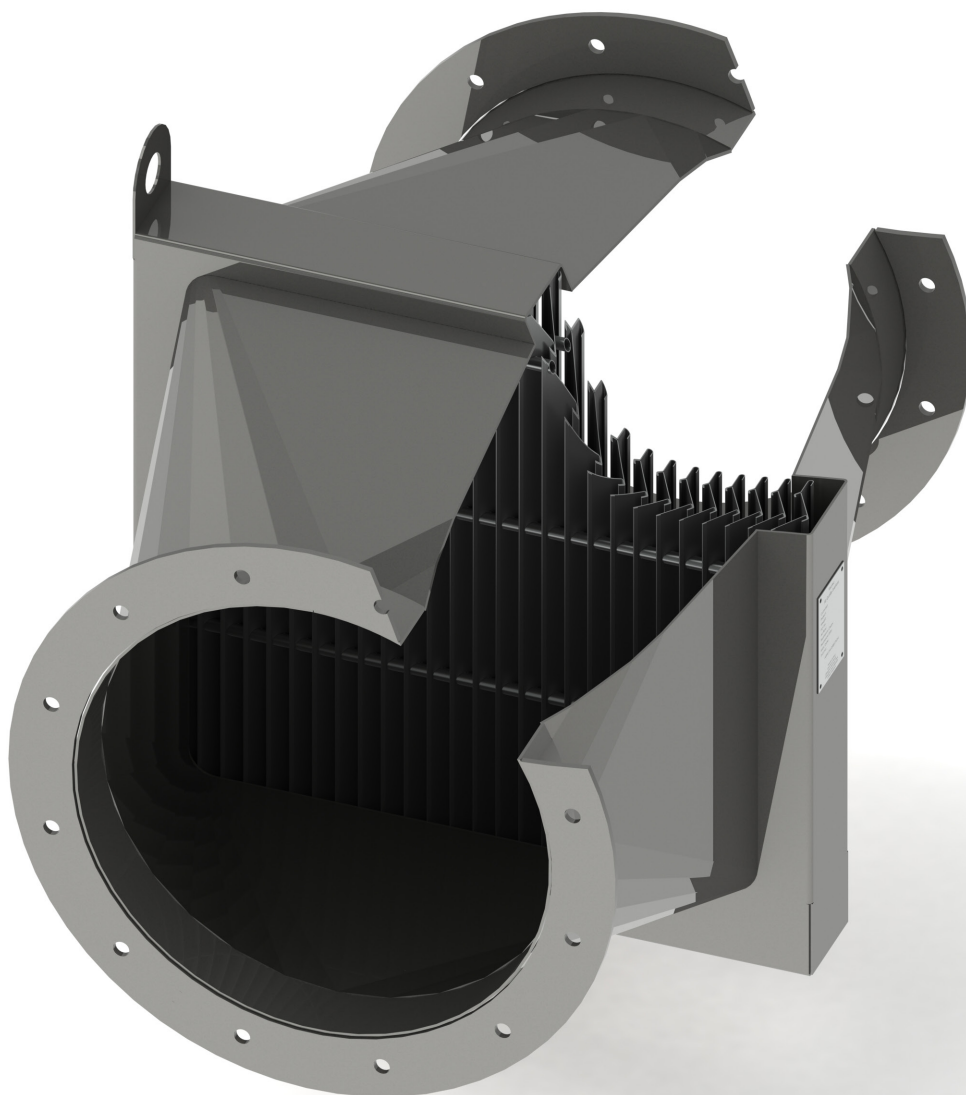


Veotec Plume Eliminator (PE1)

The PE1 was engineered to abate unsightly and potentially harmful plumes from reaching the outside environment.



Single Stage Plume Eliminator

The PE1 is used in industrial environments and is designed to collect moisture and contaminants from the air inside a condensing boiler flue or exhaust.

Features & Benefits

- Removes airborne moisture and contaminants
- High efficiency
- Low pressure loss
- Low maintenance
- Custom drainage available
- Optimised for maximum efficiency
- 30+ sizes available

Applications

- Industrial heating applications
- Flue dilution system
- Industrial

Materials of Construction (Casing)

Materials

Stainless Steel 316L (DIN 1.4404)

Thickness

Casing thickness shall depend on the overall size of the Plume Eliminator and shall be stated on the General Arrangement Drawing unless otherwise specified

Finish

Pickle and Passivate

Construction

Fully welded

Materials of Construction (SE Profile Vane)

Materials

Stainless Steel 316L (1.4404)

Finish

Natural (Brushed 180 grit prior to forming)

Construction

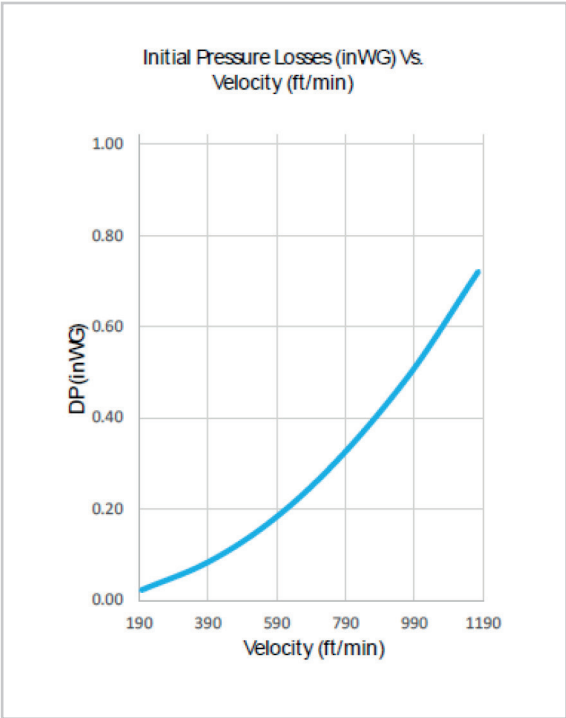
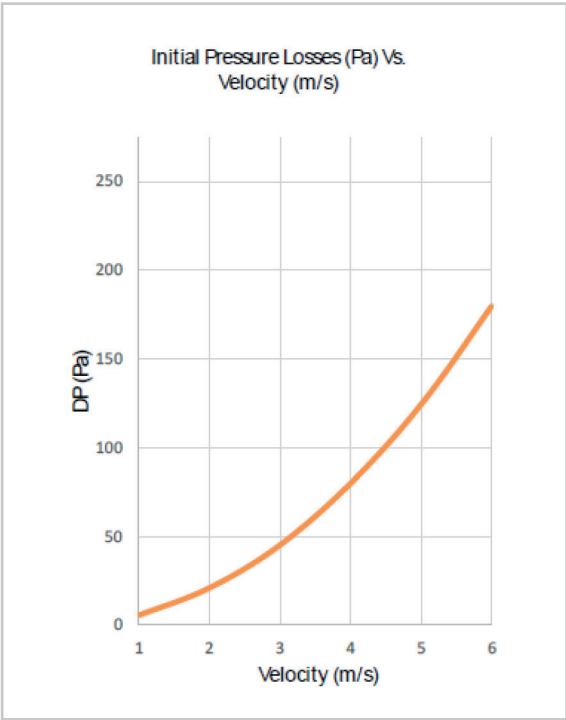
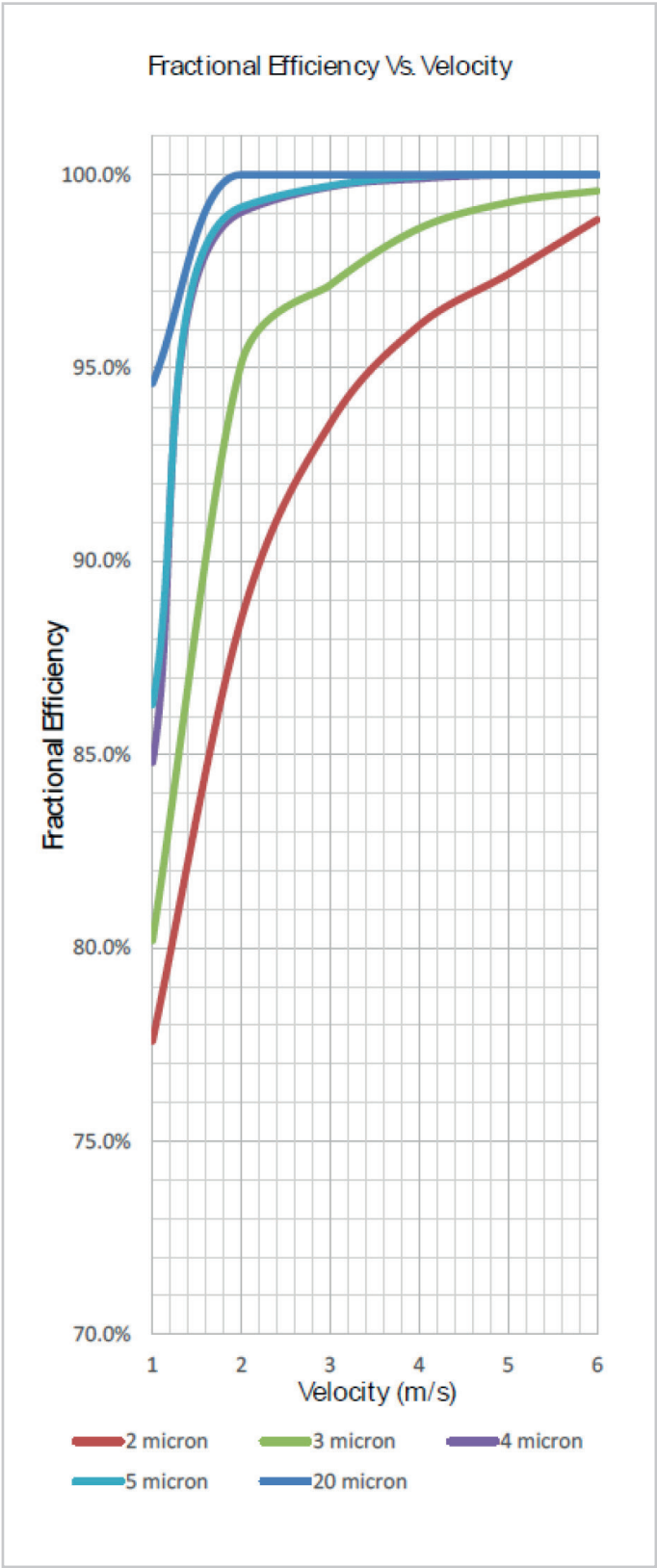
0.6mm (24 guage U.S.G.) thick roll formed from coil

Vane Spacing

316L Stainless Steel Expanded Tubing

Performance & Efficiency

Wozair’s performance and efficiency data has been independently verified by an independent testing laboratory and is proven to meet the highest of industry standards.



Wozair Limited

Grosvenor Road
Gillingham Business Park
Gillingham
Kent
ME8 0SA
United Kingdom

Phone +44 (0)1634 790 336

Email hvac@wozair.com

Wozair (USA) Ltd

3601 North Loop
336 West
Conroe
Texas
77304
United States of America

Phone +1 936 521 5990

Email houstonhvac@wozair.com

Wozair (Asia) Pte Ltd

2 Venture Drive
8-23 Vision Exchange
608526
Singapore

Phone +65 6890 6506

Email hvac@wozair.com.sg

Wozair Middle East

Office 202
LOB 17 Building JAFZA
Next to Gate 4
Dubai
P.O. Box 262404
United Arab Emirates

Phone +971 (0) 4 887 0147

Email dubaihvac@wozair.com